



# INDEED

Evidence – Based Model for Evaluation of  
Radicalisation Prevention and Mitigation

## INDEED POLICY FORUM

Advancing evidence-based policy,  
practice and evaluation in the  
P/CVE and De-radicalisation fields:  
the role of policy and policy makers

06 | 2024





# TABLE OF CONTENTS

## INTRODUCTION

---

### Page 03

About the Forum

### Page 13

The EU Knowledge Hub: a new phase of knowledge sharing and connecting PCVE practitioners, policymakers and researchers

### Page 04

An overview of the Day 1

### Page 14

The UN initiative for a Community of Practice: Experience of Collaborative Engagement, Opportunities and Challenges

### Page 05

Key points and reflections on keynote speeches

### Page 15

The role of national and local CoPs as valuable spaces for sharing lessons learned and connecting on evaluation

### Page 07

Key points and reflections on hands-on sessions

### Page 16

The role of communities of practice and their value and potential to strengthen evidence-based evaluation in the PCVE and de De-Rad fields

### Page 12

An overview of the Day 2



# ABOUT THE FORUM

The INDEED Policy Forum “Advancing evidence-based policy, practice and evaluation in the P/CVE and De-radicalisation fields: the role of policy and policy makers” took place online on the 27<sup>th</sup> and 28<sup>th</sup> June 2024.

The purpose of the Forum was to address the vital role of policy and policy makers in advancing evidence-based policy, practice and evaluation in the P/CVE and De-radicalisation fields.

The Forum had 3 key objectives:

1. To clearly recognise the importance of and the role policy makers and policy play in implementing and advancing evidence-based policy, practice and evaluation.
2. To present the tools and products developed by INDEED and how they can be used to advance evidence-based evaluation, policy and practice and to support good practice utilization.
3. To foster recognition and consensus amongst key stakeholders and local, national and EU-levels on the role of policy and policy makers and on the tools used in the field.



# AN OVERVIEW OF THE DAY 1

The Policy Event was organised to recognise the importance and the role that policy makers and policy play in implementing and advancing evidence-based policy practice and evaluation. During the session, the tools and products were presented which have been developed throughout INDEED project. Additionally, it was demonstrated during hands-on sessions how the practical tools can be used to advance evidence-based evaluation policy and practice and also to support the good practice utilization.

The main highlights of the meeting were:

- Evaluation being crucial for policy makers as it helps to understand the effectiveness of preventive policies and interventions and to formulate evidence-based policies and strategies.
- Understanding how evaluation helps understand the effectiveness of preventive policies and interventions, what works, what does not, why it works and why it doesn't in specific contexts towards formulating evidence-based policies and strategies.
- Importance of policy makers being more involved as policy measures can contribute to the prevention of radicalisation challenges.



The banner features a blue header with the INDEED logo and title. Below the title, it specifies the dates and online status. A photograph of a large conference room with people seated at round tables is shown on the right. The main text is in bold, and the date is highlighted. The footer includes a small European Union logo, a funding statement, a QR code, and the project website.

**INDEED**

## INDEED POLICY FORUM

27-28 June 2024 ONLINE

**Advancing evidence-based policy, practice and evaluation in the P/CVE and De-radicalisation fields: the role of policy and policy makers**

27<sup>th</sup> June 2024; online

This project has received funding by the European Union's Horizon 2020 research and innovation programme H2020-SU-SEC-2020 under grant agreement no 101021701

indeedproject.eu



## KEY POINTS AND REFLECTIONS ON KEYNOTE SPEECHES

### Tarja Mankinen, Prevention of Radicalisation Unit, DG Home, European Commission


#### Speech Highlights:

- Evaluation is one of the cross-cutting priorities in the [Strategic Orientations on a coordinated EU approach to prevention of radicalisation for 2024-2025](#). According to the Strategic Orientations, the evaluation of actions and interventions is essential for improving public policies. The evaluation methods should be a transparent and integral part of exchanges in this area.
- Evaluation is crucial for policy makers as it helps them to understand the effectiveness of preventive policy and interventions. It assists in formulating evidence-based policies and strategies, allocating resources and ensuring accountability. Additionally, evaluation provides insights into the important question of what works and what does not work, guiding future policy development and implementation.
- Evaluation supports efforts in strategic communication.
- The Commission launched the [EU Knowledge Hub on prevention of radicalisation](#) on 17<sup>th</sup> June 2024 in a high-level conference in Brussels. The EU Knowledge Hub can help disseminate and implement INDEED results in the following ways:
  - The thematic panels within the Hub can effectively utilize the results of existing evaluations to consolidate knowledge and provide recommendation on how evaluations can further enhance the implementation of priorities;
  - A project-based collaboration focused on evaluation could be initiated, if aligned with the needs of Member States;
  - An ad hoc workshop dedicated to presenting the outcomes of INDEED project could be organised. This would include feedback from policy makers and practitioners;
  - In evaluation, a study visit could be arranged to Member States that have conducted an evaluation utilising the outcomes of INDEED project. This visit could allow stakeholders to observe first-hand how these outcomes have been integrated into local practices and policies related to prevention, preventing radicalisation;




## KEY POINTS AND REFLECTIONS ON KEYNOTE SPEECHES

- Tailor made support service could be offered specifically in the area of evaluation. This would involve providing customized assistance to Member States or organisations seeking to implement or improve evaluation frameworks, drawing on lessons learnt from successful applications (confidential process ensuring open discussion between the requesting Member States and the expert group).
- INDEED project could serve as a pilot project, as a good practice, demonstrating how to translate knowledge practices and tools into concrete actions.




The banner for the INDEED POLICY FORUM features the INDEED logo (a cube icon) and the text "INDEED POLICY FORUM" in large white letters on a blue background. Below this, it states "27-28 June 2024" and "ONLINE". A small European Union flag and a line of text about funding are also present. The right side of the banner shows a photograph of a large, modern conference hall with a circular table and many people seated around it.

### Opening Speech



**Tarja Mankinen**  
Prevention of Radicalisation Unit  
DG Home, European Commission



**Marzena Kordaczuk-Wąs**  
INDEED Coordinator  
Polish Platform for Homeland Security

This project has received funding by the European Union's Horizon 2020 research and innovation programme H2020-SU-SEC-2020 under grant agreement no 101021701



## KEY POINTS AND REFLECTIONS ON KEYNOTE SPEECHES

### Marzena Kordaczuk-Wąs, INDEED Coordinator, Polish Platform for Homeland Security

#### Speech Highlights:

- Bringing policy makers and practitioners together is essential and this was also practiced in INDEED.
- The INDEED project produced **practical results to support policy makers and practitioners in their daily work**.
- Stakeholders (including policy makers) are taking part in the preparation and implementation of initiatives; they are also engaged in the process of evaluation. In the INDEED project, partners formulated **four main types of initiatives**: long-term programmes, short-term actions, ad-hoc interventions and policies and strategies.
- Policies and strategies are crucial for building the ground in the local environment for further activities in the field. **Without evidence-based policies and strategies, practitioners cannot be fully efficient**. This is why policy makers are the main target audience of INDEED project together with practitioners and researchers.
- Evidence-based evaluation is important because it gives the opportunity to check what works, what does not work and why things do not work in the field of practice and policy making.
- **Holistic approach is needed** - bridge between practice, the efficient policy and supported by evidence-based research.





## KEY POINTS AND REFLECTIONS ON HANDS-ON SESSIONS

During the hands-on session participants were able to hear what the INDEED project has developed in terms of practical resources and tools for policy makers. Among questions that were raised during this panel were: “How concretely could INDEED products contribute to evidence-based P/CVE policies?” or “What are the competitive advantages of the evaluation package?”.

### Irina van Der Vet, University of Helsinki

#### Speech Highlights:

- **Evidence-based evaluation greatly contributes to evidence-based policy and practice** – it greatly contributes to more knowledge and awareness on what does and does not work in the field. It can also facilitate more evidence-informed decisions.
- The evidence is extremely important, especially the evidence which is coming from good quality evaluation. **Besides the research evidence as such, the academic evidence, then evidence-based evaluation greatly contributes to communication with stakeholders.** With this kind of communication, it is relatively easy to contribute to the combination of bottom-up and bottom-down approaches to policy making. It can also contribute greatly to more rigorous analysis in the field, going slightly beyond the impact assessment. **Evaluation also offers the opportunity to look at the process of implementation of different initiatives and different strategies and action plans** to see what kind of challenges practitioners are experiencing on the ground and how policy measures can contribute to the mitigation of these challenges.
- [Evidence-Based Evaluation Model](#) can serve as a very useful approach for policy makers and stakeholders irrespective of their previous experience in evidence-based evaluation. The essential thing is that it is a **human-centered and stakeholder-centered approach to evidence-based evaluation.**
- [INDEED E-Guidebook 1](#) is an evidence-based evaluation of P/CVE and the radicalisation initiatives. What might be useful for policy makers and other groups of stakeholders are the examples of previous evaluations. Additionally, there is also an **explanation of what evidence-based evaluation is, why evaluation is needed, what the main types of evaluation are and also how to organise a human rights-based evaluation.**





## KEY POINTS AND REFLECTIONS ON HANDS-ON SESSIONS

- [INDEED TOOL](#) is designed to help P/CVE practitioners to navigate through the designing and planning process of evaluation. Moreover, the resource bank is also provided with additional sources that can assist practitioners with evaluation.
- INDEED Evaluation Package was co-designed, co-tested and co-validated with European P/CVE and De-radicalisation stakeholders (including RAN practitioners and academics). It is available in 10 languages, in an easy-to-read language. The entire evaluation package is suitable for policy makers and other stakeholders, with or without prior knowledge or experience.

### Marzena Kordaczuk-Wąs, INDEED Coordinator, Polish Platform for Homeland Security

#### Speech Highlights:

- [The repository of risk and protective factors](#) – main advantage for practitioners is that they are able to review quickly the scientific literature on the risk and protective factors that are of interest in a particular situation.
- It responds to the needs of practitioners as it enables them to quickly review the scientific literature on the risk and protective factors with the use of filters. Filters are a very practical aspect and help search for risk or protection factors that are of interest to practitioners. They can filter risk and protective factors through factors related to ideological strain, socio-economic factors, study location, and many other types of factors that will help find the right material.
- The repository is addressed to policy makers, representatives of civil society organisations, frontline practitioners, law enforcement representatives, representatives of education system, social services, prison staff, probation officers, actors dealing with the issue of P/CVE and De-radicalisation in the local environment, evaluators and researchers among others.
- The repository can also support the evaluation of P/CVE initiatives, because it brings the understanding of the field of P/CVE and can also facilitate the informed decision-making in everyday practice, using evidence derived from research and brought into practice.



## Kai Brand Jacobsen, PATRIR

### Speech Highlights:

- **Training support package** contains: 2 topics (Designing, Implementing & Utilizing Effective Evaluations of P/CVE/DeRad Initiatives; Designing Evidence-Based P/CVE/DeRad Initiatives) and 4 Component Parts (Multi-Lingual Training Curricula; Two Training Support Packages; 2 Trainers Manuals; 2 Online Self-Paced Courses).
- The INDEED Training Curricula and Training Support Packages for on-site trainings can be adopted for use by national staff colleges, training academies and institutions, and training providers. INDEED training materials can be delivered either as a complete 2-day training or as modules integrated into existing trainings. They can also be easily tailored for national or local use.
- **Online self-paced courses are free of charge** and will be **available in 10 languages**, which will help to make it easier for national governments, local authorities and practitioners in the field to implement them in their context.
- They address core gaps that have been identified in training skills and competencies in the field, and they are **suitable for policy makers and other stakeholders that may not have previous background on the topics**.
- **National and local communities of practice** – this is important as part of the architecture of evaluation, bringing together practitioners and multi stakeholder formats at local, national and European levels to foster exchange. **The EU Knowledge Hub provides a wonderful opportunity for building on the great experience.**
- In INDEED project has taken steps towards developing an evidence-based evaluation tool that can help in the field, towards developing some knowledge resources like the repository and the training materials. But it is really about **building the architecture for evaluation, learning and knowledge management at local, national and European levels, putting in place the institutions that can do this in the systems, not just relying upon individual agencies, NGOs or practitioners to take it up.** That is a game where policy makers have such a key role to play.



- The Indeed Training Package: solutions for the field:

1	Poor Evaluation Quality & Rigor: Lack of Capacity and Expertise	Lack of Technical Skills, Knowledge & Resources	Training on Evidence- Based Evaluation and the INDEED EBE Tool & Model
2	Absence of Key Skills & Competences: EBE & Evidence-Based Design	General Trainings in the Field Exclude Evaluation & Initiative Design	Training on Designing Evidence-Based Initiatives
3	Absence of Training Materials in the Field for Evidence-Based Evaluation & Evidence-Based Policy and Practice	Staff Colleges & Training Institutions Lack Appropriate Curricula & Training Resources	Development of the Multi- Lingual Training Support Package

## Vasileios Theofilopoulos, Hellenic Police

### Speech Highlights:


- From practitioners' perspective, there are a lot of added values deriving from INDEED project: being able to evaluate ad-hoc actions, learning how to design an initiative based on evidence, evaluating not only existing initiative or an action, but also, the most crucial, is to learn and to understand how to develop interventions before implementing them.
- The Risk and Protective Factors Repository is good practice because it bridges a critical gap between researchers and practitioners by providing practitioners with access to empirical studies that examines risk and protective factors associated with radicalisation processes. Additionally, it brings together scientific studies on the same phenomenon conducted in different countries.
- It is very important that the INDEED e-guidebooks are available in 10 languages because it is very helpful for practitioners to have the materials available in their own language.
- Emphasis should be placed on the exploitation of project results in other countries and ensuring the availability of all results at national level.
- We should look for ways, within the new EU Knowledge Hub, to make better use of the results of the INDEED project, as well as other EU-funded initiatives.

## Robert Orell, TRANSFORM

- INDEED project definitely **advances the evidence-based evaluation** in the P/CVE field and emphasizes that **evaluation is truly essential** to find out what works, how and why.


## Irina Van Der Vet, University of Helsinki

- Two points need to be highlighted, especially for policy makers. First, evaluation is most successful and useful when it is designed based on maximising learning. Start with process evaluations and foreground the needs of the initiative so that the evaluations are designed to help to learn from what they have done. The emphasis should be on thinking less about controlling or proving impact with numbers. The second key point is to understand that evaluation takes time and resources.


 **INDEED**
Policy Forum | 27<sup>th</sup> June 2024

### INDEED EVALUATION PACKAGE


Intended mainly for policymakers and practitioners in the P/CVE field



**1) Evidence-based evaluation model**



**2) E-guidebooks on evidence-based evaluation**



**3) Web-based INDEED Tool for planning evidence-based evaluations**

This project has received funding by the European Union's Horizon 2020 research and innovation programme H2020-SU-SEC-2020 under grant agreement nr 101021701



# AN OVERVIEW OF DAY 2

---

The special session on Communities of Practice was intended to explore the role of communities of practice within the field, highlighting their role, value and significance in enhancing collaborative efforts among experts and practitioners and for advancing evidence-based practice, evaluation and policy in the field; latest developments and initiatives in the field; the role of communities of practice at local, national, and international levels, and how to advance effective CoPs which can help improve the quality of evidence-based evaluation in the field.

The special session featured Josephine Mwenda, Co-chair of the Sub-Group on Evaluation of the Working Group on Resource Mobilization, Monitoring and Evaluation (RMME.WG) of the United Nations, Sophie Ebbecke of the Global Public Policy Institute (GPPI) and PrEval, and Kai Brand-Jacobsen, Kai Brand Jacobsen, PATRIR and Lead INDEED Knowledge Series.

Speakers emphasized the importance of facilitating communities at both the European and local levels and highlighted the potential of Communities of Practice to strengthen evidence-based evaluation in PVE and de-radicalization. They also discussed the significance of fostering knowledge management and learning among practitioners, policymakers, and evaluators to enhance the effectiveness of PCVE evaluation.

The special session placed a spotlight and brought forward and shared reflections and experiences on:

- Latest developments in the field for the creation of communities of practice: The EU Knowledge Hub and how it can support communities of practice
- UN's efforts to develop a community of practice at global level for M&E in CT and PCVE, opportunities and challenges of CoP
- The role of national and local networks as CoP for sharing lessons learned and advancing evaluation and evidence-based practice in the field, sharing key findings from the PrEval initiative

This session underscored the vital role that communities of practice play in enriching the professional landscape of those working within the realms of PVE, CVE, and Deradicalization by providing a platform for continuous learning and collaboration.

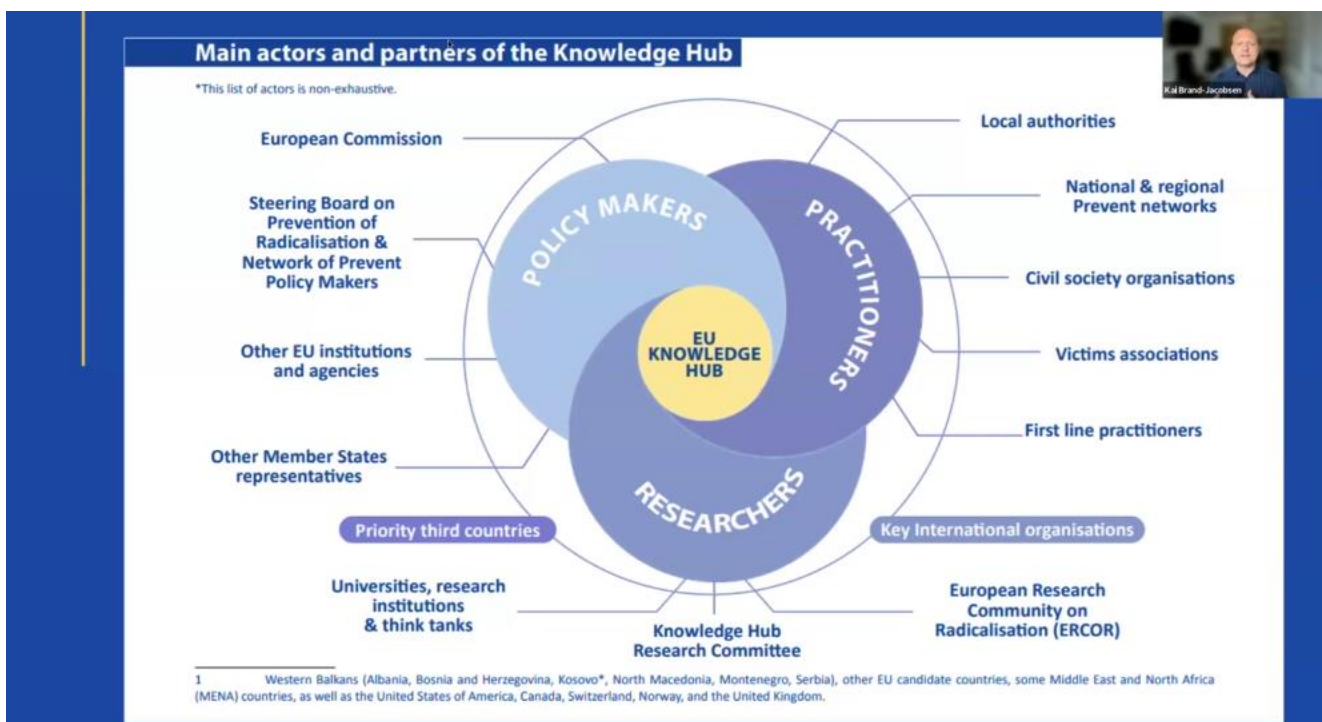
The special session on CoP closed with working groups inviting participants to share key priorities for communities of practice, how they can benefit and support their work.



## KEY POINTS AND REFLECTIONS ON COMMUNITIES OF PRACTICE

### The EU Knowledge Hub: a new phase of knowledge sharing and connecting PCVE practitioners, policymakers and researchers

- The EU Knowledge Hub represents a new phase in the field of sharing experiences learning and connecting practitioners, policymakers and researchers across the European Space, who are working in the fields of preventing and countering violent extremism and de radicalization.
- The Knowledge Hub will engage with local actors, civil society organizations, and international partners to address radicalization and promote evidence-based evaluation.
- It will bring together platforms of experts and networks to discuss, brainstorm and consolidate knowledge within key areas of the field
- Plans include organizing joint events for policy and practice, learning from past experiences to strengthen connections between ground-level practitioners and policymakers.
- It will foster training and mentoring, job shadowing, and the use of foresight scenarios to anticipate future developments in the fields of violent extremism and radicalization.
- The Knowledge Hub aims to strengthen multi-sectoral collaboration, enhancing the integration of various stakeholders in the field and emphasizing bottom-up approaches to empower local communities.
- Besides activities within Europe, the Knowledge Hub also seeks to expand international cooperation and work with priority third countries, building upon the existing work of projects to implement evidence-based approaches and scenario planning.





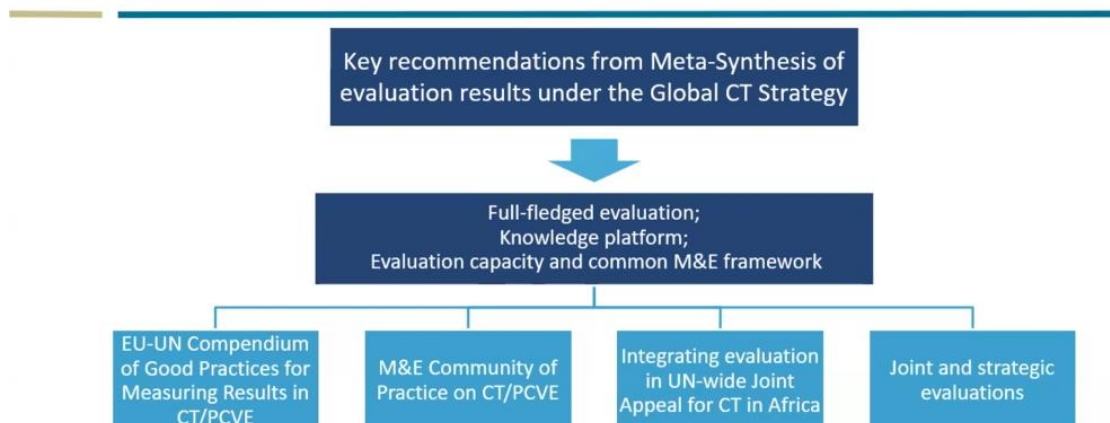
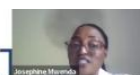
## KEY POINTS AND REFLECTIONS ON COMMUNITIES OF PRACTICE

### The UN initiative for a Community of Practice: Experience of Collaborative Engagement, Opportunities and Challenges

The key activities, challenges, and strategic directions of the subgroup have been shared, highlighting its central role in advancing the evaluation capabilities of the United Nations in counterterrorism and preventive actions.

- UN entities collaborate in the Resource Mobilization, Monitoring, and Evaluation Working Group to advance evaluation knowledge and practices for evaluating UN's counterterrorism efforts. The evaluation subgroup focuses on enhancing the United Nations' ability to measure and assess the impact of its counterterrorism and preventative strategies.
- The subgroup operates under UN Global Counterterrorism Strategy, facilitating a coordinated approach across 47 entities to support member states effectively.
- The Subgroup functions as a community of practice for monitoring and evaluation within the counterterrorism and preventive fields, promoting learning and collaboration. The Subgroup shares a lot of evaluation knowledge and best practices for contributing to decision making at all levels.
- Initiatives include conducting meta-analyses of evaluation reports to improve decision-making processes and the subgroup developed a Compendium of good practices in evaluating CT and PCVE efforts.
- The subgroup engages in joint evaluations to leverage diverse expertise, enhancing the quality and breadth of evaluations conducted. The Sub-group emphasizes cooperation as a force multiplier, highlighting the importance of shared learning and leveraging existing capacities.
- Challenges include resource intensity and the need for tailored communication strategies. Opportunities arise from high-level support and the integration of evaluation into core UN operations.
- Cooperation, innovation, and agility within the evaluation process are important to remain effective and relevant in evolving security environments.

#### SUB-GROUP ON EVALUATION – CONCRETE RESULTS





## KEY POINTS AND REFLECTIONS ON COMMUNITIES OF PRACTICE

### The role of national and local CoPs as valuable spaces for sharing lessons learned and connecting on evaluation

- The PreVal project aims to conduct research, develop new formats, and redesign structures to improve evaluation and quality assurance in extremism prevention, democracy promotion, and civic education.
- An international expert survey highlighted the indispensable role of both informal and formalized networks in bolstering evaluation expertise globally. These networks are vital in addressing the widespread shortfall in evaluation capacity observed in numerous countries.
- Research within PreVal underscores the significance of multi-level community practices and support networks—spanning local, regional, and international scopes—to foster a robust evaluation ecosystem.
- PreVal found that national and local communities of practice play an important role in sharing lessons learned and connecting on evaluation.
- Experts recognize networks as crucial platforms for knowledge exchange and problem-solving, which facilitate mutual learning and the generation of new insights.
- Networks serve as crucial forums for discussing prevalent challenges and obtaining specialized evaluation advice, thereby linking experts with targeted expertise.
- There is a recognized need for local communities of practice to enhance knowledge sharing and foster evidence-based policy-making.
- Organizing local communities of practice can help build capacity and address specific evaluation challenges in a particular context.



Based on Allan, B. (2008). Knowledge creation within a community of practice



## KEY POINTS AND REFLECTIONS ON COMMUNITIES OF PRACTICE

### The role of communities of practice and their value and potential to strengthen evidence-based evaluation in the PCVE and de DeRad fields

- **Communities of Practice (CoPs):** Defined as groups sharing concerns or passions about a topic, deepening knowledge through continuous interaction.
- **Three Key Components:** CoPs are characterized by a shared domain of interest, a community fostering relationship, and a commitment to a practice field where members collaborate and share innovative solutions.
- **Building Trust and Collaboration:** CoPs help build trust among members across different sectors and institutions, which is crucial in fields like PCV and de-radicalization where interdisciplinary cooperation is essential.
- **Knowledge Sharing:** They facilitate the exchange of both tacit and explicit knowledge, aiding in the development of shared practices and collective intelligence.
- **Self-Selected Membership:** Members choose to join based on their interests and motivations, which enhances engagement and effectiveness compared to mandated participation.
- **Breaking Down Communication Barriers:** By establishing regular communication channels, CoPs allow for free information flow among diverse groups, fostering a welcoming and supportive environment.
- **Addressing Practical Challenges:** Through communal support and shared understanding, CoPs help members address common challenges and find practical solutions, enhancing individual and collective motivation.
- **Standardization and Innovation:** They promote the adoption of best practices and innovative solutions in the field, helping to phase out ineffective or outdated methods.
- **Structured Interactions:** Regularly scheduled meetings and events provide continuous opportunities for learning and collaboration among members.
- **Impact on Policy and Practice:** CoPs have been recognized for their role in advancing evidence-based evaluation, influencing policy, and improving the effectiveness of interventions in the fields of PCV and de-radicalization.
- These communities not only foster professional growth and innovation but also enhance the strategic capabilities of organizations involved in preventing and countering violent extremism.

# USEFUL LINKS

- To watch the video recording from day 1 click this link:

<https://www.youtube.com/watch?v=22We8Yz9dCA&t=2s>



- To watch the video recording from day 2 click this link:

[https://www.youtube.com/watch?v=j9YJBwFp\\_04](https://www.youtube.com/watch?v=j9YJBwFp_04)





# INDEED

Evidence – Based Model for Evaluation of  
Radicalisation Prevention and Mitigation

## CONTACTS



[Indeedproject.eu](https://indeedproject.eu)



[contact@indeedproject.eu](mailto:contact@indeedproject.eu)



[Indeed Project](https://www.youtube.com/IndeedProject)



[IndeedEUproject](https://twitter.com/IndeedEUproject)



[Indeed-euproject](https://www.linkedin.com/company/Indeed-euproject)

