



INDEED – Evidence-Based Model for Evaluation of Radicalisation Prevention and Mitigation

The project aims to strengthen first-line practitioners' and policy makers' knowledge, capabilities and skills for designing, planning, implementing and evaluating Preventing Violent Extremism (PVE), Countering Violent Extremism (CVE) and De-radicalisation initiatives, such as policies and strategies, long-term programmes, short-term actions and ad-hoc interventions, in an effective and proven manner.

Identification on Practitioners' and Policy Makers' Gaps and Requirements

The SMART (Stakeholder Multisector Anti-Radicalisation Teams) Hubs involve the INDEED project's stakeholders that include key first-line practitioners working in the field of PVE/CVE and De-radicalisation (Law Enforcement Agencies, prison and probation services, non-governmental organisations (NGOs), civil society organisations (CSOs), social and health services, youth organisations), policy makers including EU, national, local, and regional authorities, and education and research sector.



INDEED geographical SMART Hubs are composed of key actors responsible for actions in the area of PVE / CVE and De-radicalisation, these are:

FIRST-LINE PRACTITIONERS:

LEAs and relevant networks of practitioners, prison and probations services, NGOs, CSOs, social and health services, youth organisations;

POLICY MAKERS:

European Commission, policy makers at local, regional, national and EU level, governmental organisation;

EDUCATION AND RESEARCH:

Universities, EU projects, academic institutions and groups, research organisations, educational institutions, training institutions, staff colleges;

OTHER:

All other relevant stakeholders that fall outside the three above groups.

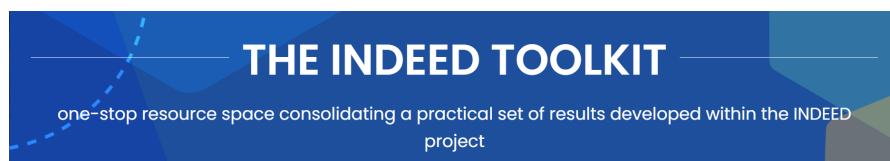
SMART Hub Roadmap

It maps out INDEED's stakeholders, establishing the stakeholders' engagement framework and building a network of SMART Hubs that will form the basis for the interdisciplinary and participatory engagement throughout the project.



The INDEED Toolkit

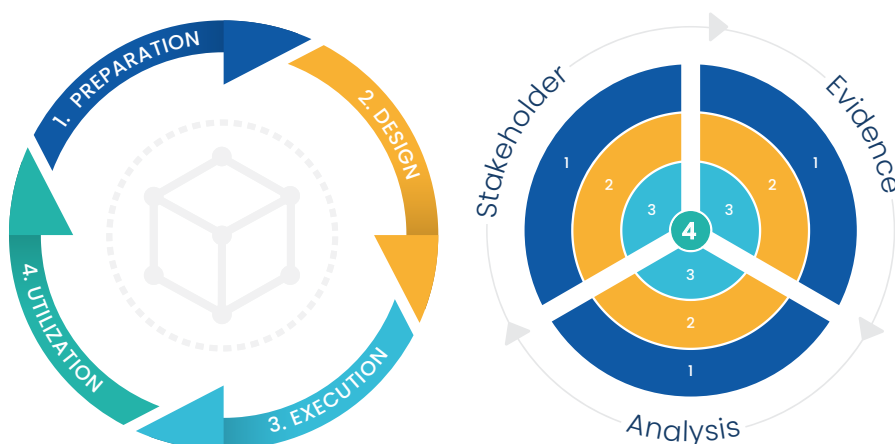
A ground-breaking resource space consolidating a practical set of results developed within the INDEED project. It offers a practical, comprehensive and multilingual knowledge package required to design and evaluate PVE/CVE and De-radicalisation initiatives with the use of evidence-based principles, tools, training and learning materials.



The Evidence-Based Evaluation Model (EBEM) and Evaluation Tool dedicated to the PVE/CVE/De-radicalisation initiatives.

The Evidence-Based Evaluation Model (EBEM) for radicalisation prevention and mitigation

The model is a result of a collaborative approach among project partners, members of the INDEED Advisory Board, various practitioners from national SMART Hubs, Radicalisation Awareness Network (RAN) members and international academic experts in evaluation. The model was designed to provide a basic idea on evaluation, and it serves as a resource for evaluation planners, with or without previous skills in evaluation.



1 PREPARATION	2 DESIGN	3 EXECUTION	4 UTILIZATION
STAKEHOLDER: <input type="text" value="Cooperation"/> ⓘ <input type="text" value="Resources"/> ⓘ <input type="text" value="GELSA, GDPR"/> ⓘ	STAKEHOLDER: <input type="text" value="Involvement"/> ⓘ <input type="text" value="Evaluation questions"/> ⓘ <input type="text" value="GELSA, GDPR"/> ⓘ	STAKEHOLDER: <input type="text" value="Communication"/> ⓘ <input type="text" value="GELSA, GDPR"/> ⓘ	STAKEHOLDER: <input type="text" value="Communication"/> ⓘ <input type="text" value="GELSA, GDPR"/> ⓘ
EVIDENCE: <input type="text" value="Data"/> ⓘ <input type="text" value="Knowledge"/> ⓘ <input type="text" value="GELSA, GDPR"/> ⓘ	EVIDENCE: <input type="text" value="Data"/> ⓘ <input type="text" value="Methods"/> ⓘ <input type="text" value="GELSA, GDPR"/> ⓘ	EVIDENCE: <input type="text" value="Data"/> ⓘ <input type="text" value="GELSA, GDPR"/> ⓘ	EVIDENCE: <input type="text" value="Presentation"/> ⓘ <input type="text" value="Recommendations"/> ⓘ <input type="text" value="GELSA, GDPR"/> ⓘ
ANALYSIS: <input type="text" value="Initiative"/> ⓘ <input type="text" value="Objectives"/> ⓘ <input type="text" value="Challenges"/> ⓘ <input type="text" value="GELSA, GDPR"/> ⓘ	ANALYSIS: <input type="text" value="Timeline"/> ⓘ <input type="text" value="Challenges"/> ⓘ <input type="text" value="GELSA, GDPR"/> ⓘ	ANALYSIS: <input type="text" value="Challenges"/> ⓘ <input type="text" value="Interpretation"/> ⓘ <input type="text" value="GELSA, GDPR"/> ⓘ	ANALYSIS: <input type="text" value="Challenges"/> ⓘ <input type="text" value="Follow-up"/> ⓘ <input type="text" value="GELSA, GDPR"/> ⓘ

The Evaluation Tool for practitioners and policy makers including testing and validation

The INDEED Tool is based on the Evidence-Based Evaluation Model. It helps to plan and conduct evidence-based evaluations of PVE/CVE and De-radicalisation initiatives. It introduces what is needed to know about evaluation at all stages of the initiative's implementation. It is suitable for a wide range of initiatives implemented in different sectors and contexts. It offers instructions for planning various kinds of evaluations, such as more extensive formative, process, and outcome evaluation as well as more limited evaluations that focus on ad-hoc interventions and single cases.

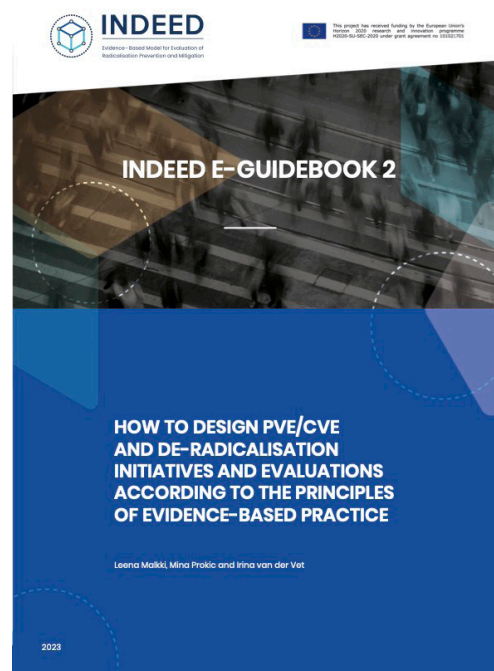
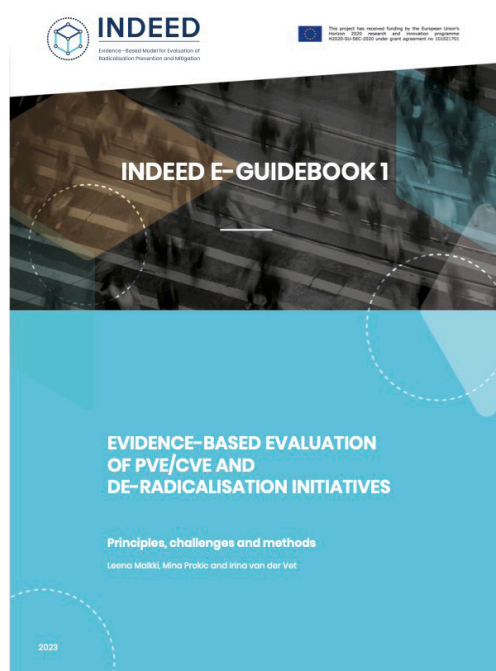


Professional e-Guidebook for designing planning, implementation and evaluation of PVE/CVE/De-radicalisation initiatives

The INDEED e-guidebook 1 provides a concise introduction to the fundamentals of evaluation and what an evidence-based approach to evaluation means. It introduces different evaluation types, designs, and methods, and provides guidance on when to do evaluations and who should do them. It includes a chapter on ethics and evaluation, as well as numerous examples of previous evaluations of PVE/CVE/De-radicalisation initiatives. This e-guidebook is available in 10 different languages (English, Spanish, Romanian, Polish, Latvian, Italian, German, French, Greek and Bulgarian).



INDEED E-Guidebook 2 goes deeper into how to apply an evidence-based approach to evaluation. It provides guidance for how to build evaluation into the initiative design, as well as step-by-step instructions for designing and implementing an evidence-based evaluation. It also includes further information on how to ensure the evaluation is conducted ethically. This e-guidebook is available in 10 different languages (English, Spanish, Romanian, Polish, Latvian, Italian, German, French, Greek and Bulgarian).



Strengthening Practitioners', Policy makers' Field Competencies for Evidence-based Practice

Comprehensive Analysis Report on trainings, learning tools, gaps and needs for evaluation and initiatives'

The report aims at collecting and compiling information on existing training and learning tools in the PVE/CVE/DeRAD field, as well as identifying needs and gaps experienced by experts, practitioners, and policymakers in this regard. Its results will serve as a key basis and guidelines to the development of INDEED's training curricula and training support packages.



Improving Practice: Field Trainings, Train the Trainers and Trainers Community

INDEED brought together two of the leading training courses for practitioners and professionals who worked on PVE / CVE and De-Radicalisation initiatives in Europe. The training programs were each 2-days long and ran back-to-back. The first training tackled how to design, implement, and use evidence-based evaluations in the field. The second focused on designing evidence-based PVE/CVE and De-radicalisation initiatives such as policies and strategies, long-term programs, short-term actions, and ad hoc interventions.

Training 1- Designing, Implementing and Utilizing Effective Evaluation of PVE/CVE/De-Radicalisation Initiatives (policies and strategies, long-term programmes, short-term actions, and ad hoc interventions). | 26-29 February 2024; Bremen

Training 2 - Designing Evidence-Based of PVE/CVE/De-Radicalisation Initiatives (policies and strategies, long-term programmes, short-term actions, and ad hoc interventions). | 12-15 March 2024; Madrid

Gender, Legal, Ethical and Social Aspects

Gender, Ethical, Social and Legal Guidelines for the project's research activities and Gender, Legal, Social and Ethical Checklist for activity assessment

This deliverable addresses the gender, ethical, legal, and societal issues that may arise throughout the research activities of the INDEED project. Throughout the length of the project, activities will be monitored with regards to the presented guidelines.





STAY IN TOUCH

in Indeed-euproject

 Indeed Project

 IndeedEUproject



This project has received funding by the European Union's
Horizon 2020 research and innovation programme
H2020-SU-SEC-2020 under grant agreement no 101021701